



# THE GEO PROJECT

ANTARCTICA - A PLACE IN THE WILDERNESS • INTIMATE TRANSACTIONS • HABITUS-HABITAT • REPLANT

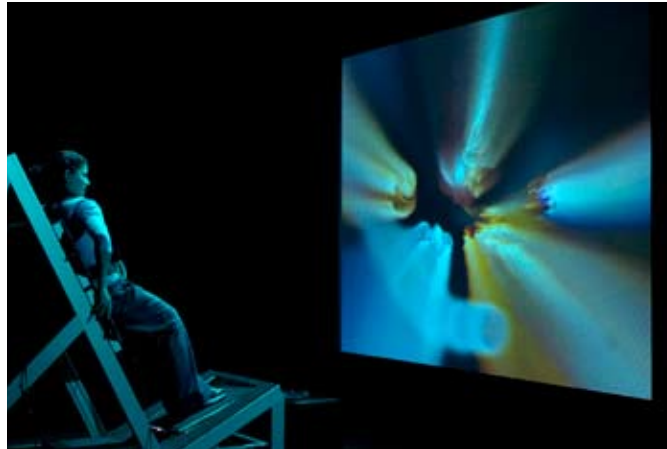
EDUCATION KIT FOR UPPER PRIMARY SCHOOL

## INTIMATE TRANSACTIONS

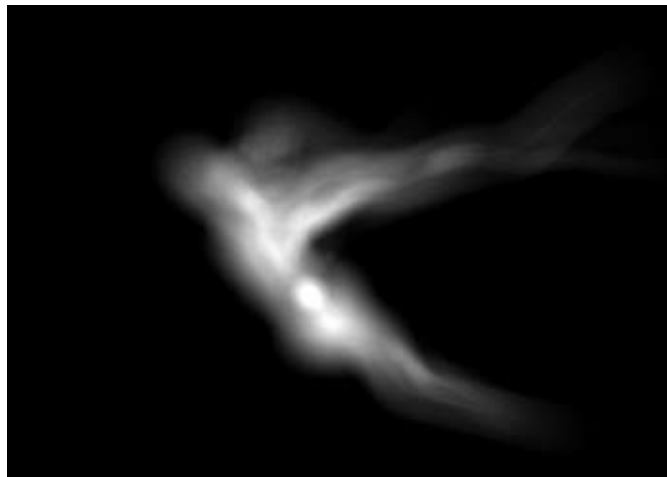
*Intimate Transactions* is a new form of interactive installation that allows two people in geographically separate spaces to interact simultaneously using only their bodies. As this highly immersive experience evolves, each person begins to sense their place in a complex web of relations that connects them and everything else within the work.

Each participant uses a physical interface called a 'Bodyshelf'. By gently moving their bodies on this 'smart furniture', they instigate 'intimate transactions', which influence an evolving 'world' created from digital imagery, multichannel sound and tactile feedback.

This shared experience allows each participant to gradually develop a form of sensory intimacy with the other, despite the fact that they are geographically separated and cannot physically see or hear each other.



The Transmute Collective *Intimate Transactions* Showing ACMI, Melbourne  
Photo: David McLeod



The Transmute Collective *Force of Change* Photo: Stuart Lawson



### EXAMINE AND PREPARE

Before you complete this sheet, view the exhibition online or visit it in person. On The GEO Project website you can find the tour itinerary, search the Image Galleries and find downloads.



### CONSIDER

Sensory experiences are those that stimulate our senses (taste, touch, smell, sight, sound).

Which sense is most commonly stimulated when experiencing artworks in an art gallery?

What other sensory experiences does this artwork present?

---

---

---

---

---

What do the 'creatures' in this installation remind you of?

---

---

---

---

---

### Answer in your visual diary/journal

- ➔ Write a reflection about your experience of this artwork. Include a description of the emotions you felt before, during and after the experience.
- ➔ If you were to redesign the artwork to change the experience, what changes would you make?
- ➔ Describe the ways in which this artwork might reflect the theme of 'science'? (Start by thinking of some scientific words that the different elements remind you of.)
- ➔ In what ways does this work reflect the title *Intimate Transactions*? In what ways is the title inaccurate?
- ➔ Propose another title for the artwork and explain why this would also be relevant.



The Transmute Collective *Force of Insatiability* Photo: Stuart Lawson

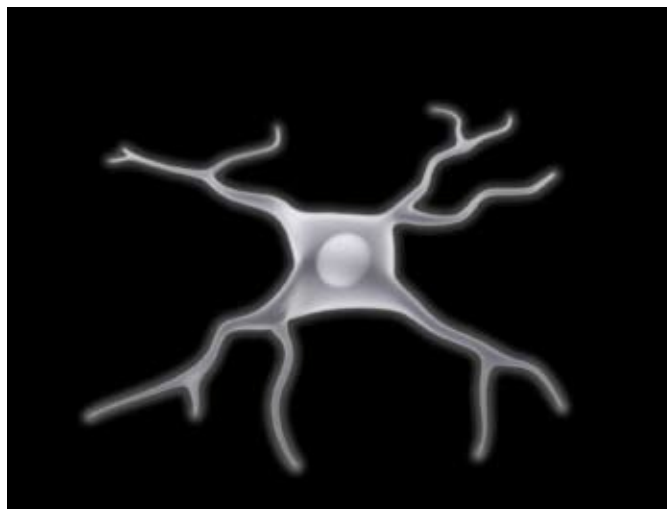
### ➔ RESPOND

Examine some Science textbooks to identify possible organisms that have inspired the imagery in *Intimate Transactions*.

Document these in your visual diary/journal. Find some images of other strange creatures that would also be good to include. List these and where they can be found in the world.

Using your research, design another 'creature' that would be good to be incorporated into the installation and explain why.

In a group, develop a drama presentation that captures the essence of the *Intimate Transactions* experience. Use actors to be the 'Bodyshelf' participants, the creatures and to create the related sounds. Consider also the structures, light and movement - will they be real or implied?



The Transmute Collective *Force of Torment* Photo: Stuart Lawson



### GEO CROSSOVER

Answer the following questions in your visual diary/journal...

Each of the GEO exhibitions interpret and present, in different ways, the idea of art and the environment. What makes *Intimate Transactions* so unique in how it has interpreted this theme?

Why is it appropriate to include it in the group of GEO exhibitions? Would you have included this exhibition as a part of GEO?

The GEO exhibitions present narratives about each place. Very broadly, a narrative is a story that can be 'read' or interpreted. What narrative or story is being communicated through the experience of *Intimate Transactions*?