



THE GEO PROJECT

ANTARCTICA - A PLACE IN THE WILDERNESS • INTIMATE TRANSACTIONS • HABITUS-HABITAT • REPLANT

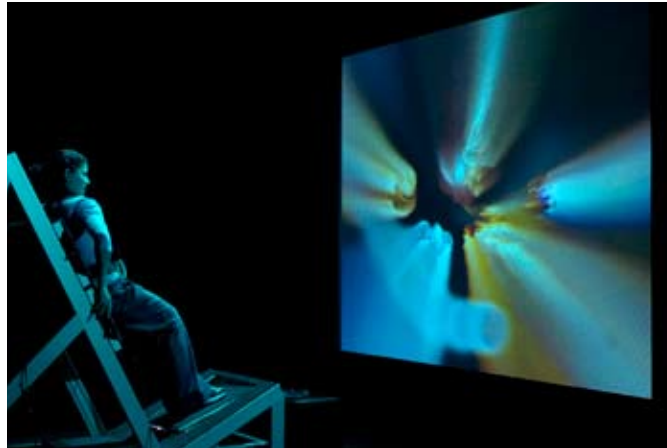
EDUCATION KIT FOR LOWER SECONDARY SCHOOL

INTIMATE TRANSACTIONS

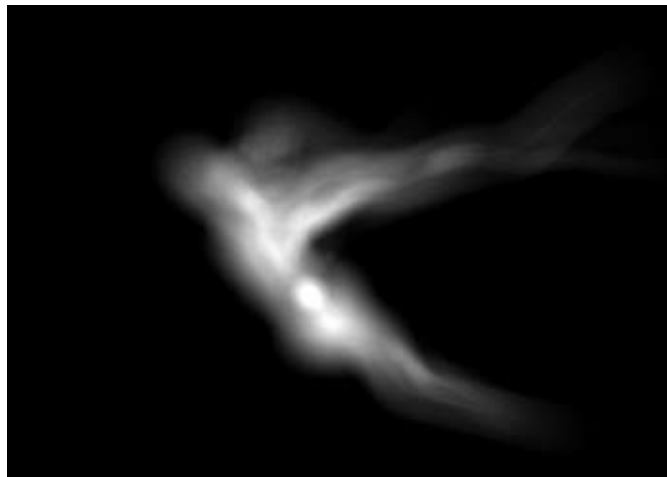
Intimate Transactions is a new form of interactive installation that allows two people in geographically separate spaces to interact simultaneously using only their bodies. As this highly immersive experience evolves, each person begins to sense their place in a complex web of relations that connects them and everything else within the work.

Each participant uses a physical interface called a 'Bodyshelf'. By gently moving their bodies on this 'smart furniture', they instigate 'intimate transactions', which influence an evolving 'world' created from digital imagery, multichannel sound and tactile feedback.

This shared experience allows each participant to gradually develop a form of sensory intimacy with the other, despite the fact that they are geographically separated and cannot physically see or hear each other.



The Transmute Collective *Intimate Transactions* Showing ACMI, Melbourne
Photo: David McLeod



The Transmute Collective *Force of Change* Photo: Stuart Lawson



EXAMINE AND PREPARE

Before you complete this sheet, view the exhibition online or visit it in person. On The GEO Project website you can find the tour itinerary, search the Image Galleries and find downloads.



CONSIDER

Sensory experiences are those that stimulate our senses (taste, touch, smell, sight, sound).

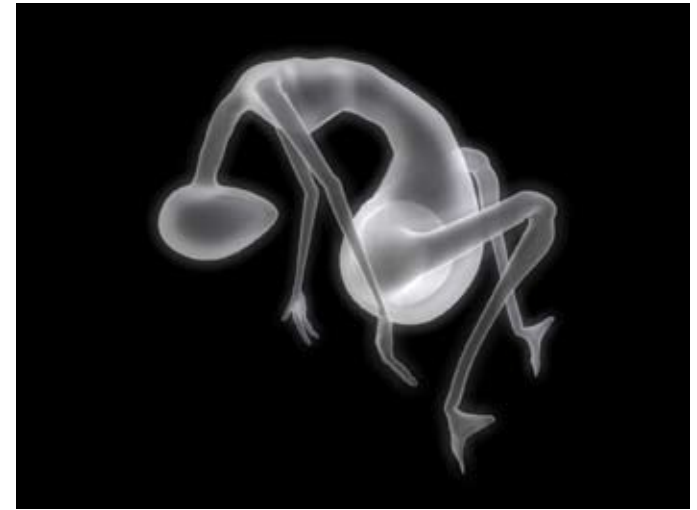
Which sense is most commonly stimulated when experiencing artworks in an art gallery?

What other sensory experiences does this artwork present?

What do the 'creatures' in this installation remind you of?

Answer in your visual diary/journal

- ➔ Write a reflection about your experience of this artwork. Include a description of the emotions you felt before, during and after the experience.
- ➔ If you were to redesign the artwork to change the experience, what changes would you make?
- ➔ Describe the ways in which this artwork might reflect the theme of 'science'? (Start by thinking of some scientific words that the different elements remind you of.)
- ➔ In what ways does this work reflect the title *Intimate Transactions*? In what ways is the title inaccurate?
- ➔ Propose another title for the artwork and explain why this would also be relevant.



The Transmute Collective *Force of Insatiability* Photo: Stuart Lawson

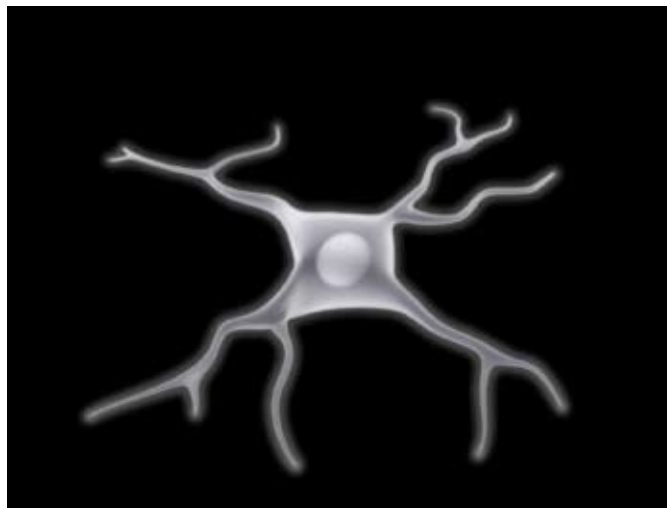
➔ RESPOND

Examine some Science textbooks to identify possible organisms that have inspired the imagery in *Intimate Transactions*.

Document these in your visual diary/journal. Find some images of other strange creatures that would also be good to include. List these and where they can be found in the world.

Using your research, design another 'creature' that you would like to be incorporated into the installation and explain why.

In a group, develop a drama presentation that captures the essence of the *Intimate Transactions* experience. Use actors to be the 'Bodyshelf' participants, the creatures and to create the related sounds. Consider how you will incorporate the structures, light and movement in your presentation.



The Transmute Collective *Force of Torment* Photo: Stuart Lawson



GEO CROSSOVER

Answer the following questions in your visual diary/journal...

Each of the GEO exhibitions interpret and present, in different ways, the idea of art and the environment. What makes *Intimate Transactions* so unique in how it has interpreted this theme?

Why is it appropriate to include it in the group of GEO exhibitions? Would you have included this exhibition as a part of GEO?

The GEO exhibitions present narratives about each place. Very broadly, a narrative is a story that can be 'read' or interpreted. What narrative or story is being communicated through the experience of *Intimate Transactions*?



THE GEO PROJECT

ANTARCTICA - A PLACE IN THE WILDERNESS • INTIMATE TRANSACTIONS • HABITUS-HABITAT • REPLANT

EDUCATION KIT FOR LOWER SECONDARY SCHOOL

ANTARCTICA - A PLACE IN THE WILDERNESS

Antarctica - A Place in the Wilderness is an exhibition of photography by Judy Parrott taken during an Australian Antarctic Division Arts Fellowship in 2005/2006.

In 2005, after a crash course in knot-tying, navigation, radio communication and rescue methods, the artist travelled to the Antarctic on board the *Aurora Australis*. She documented her time in Australia's three research stations, where she was inspired by the work, environment and community life of people employed there. The result of the journey is a series of dramatic photographs of this extreme environment that capture the exhilarating experience of being surrounded by ice.

The exhibition is multi-sensory. In addition to the black and white photographs, there is a large projection of colour imagery, a soundscape of local sounds, and found objects collected from the Antarctic environment with a collection permit issued by Australian Antarctic Division for exhibition purposes.



EXAMINE AND PREPARE

Before you complete this sheet, view the exhibition online or visit it in person. On The GEO Project website you can find the tour itinerary, search the Image Galleries and find downloads.

It will be helpful to read the artist's diary extracts or download the audio version from the website.



Judy Parrott *Walking on the Antarctic plateau is like floating on a giant, white disc suspended in space...* 2006 silver gelatin photograph



CONSIDER

In the exhibition, find a photograph that is 'narrative' and one that is more 'abstract'. Explain the difference by referring to the specific artworks.



Judy Parrott *Moulting Elephant seals in their wallow beside Davis Station* 2006 silver gelatin photograph



Judy Parrott *Weddell seals come up for air through the sea ice at Mawson...* 2006 silver gelatin photograph

RESPOND

Take some photos of natural areas and use the techniques of Judy Parrott. Try to –

- experiment with cropping so that the environments are not necessarily recognisable
- experiment with placing different textures and images next to each other
- to create a collage of something new
- experiment with cutting sections away of one image and placing it over the top of another to create an abstract image
- compose 'narrative' and 'abstract' photos that focus on the same place

Create a display with your images. As the curator, you will need to consider how you will present them together.



GEO CROSSOVER

Design an artwork for a Great Walk in Antarctica. What would it look like? What materials would you use? Your designs should reflect the same approach as one of the artists presented in the *Habitus – Habitat* exhibition. In your design, explain how and why the artwork reflects the same approach.

Keep a diary or online blog every day for two weeks and make a photo that references the key event of that day (or experience). Incorporate in the blog scanned drawings or photographs of objects, music and/or sounds that would be meaningful with the text.

With your teacher and parent/guardian's permission, find out how to create your own blog at www.blogger.com

Which three pictures in the exhibition do you consider the most effective in capturing the artist's experiences? How do these works capture her experience of this environment?

How might the inclusion of found objects enhance or distract the viewer's experience of this photographic exhibition? Explain your answer.



THE GEO PROJECT

ANTARCTICA - A PLACE IN THE WILDERNESS • INTIMATE TRANSACTIONS • HABITUS-HABITAT • REPLANT

EDUCATION KIT FOR LOWER SECONDARY SCHOOL

REPLANT

Replant is an excursion into the remarkable world of plants in the tropical north of Australia through the eyes of six Indigenous and non-Indigenous printmakers and a photographer. Working with the Northern Territory Herbarium and traditional knowledge custodians from the Daly River region, the artists have investigated the unique characteristics of Indigenous plant species that survive and prosper through the climatic extremes of monsoonal rains, dry weather and wild fires.

Replant reflects the traditional role of women as gatherers of food and holders of knowledge, while the process of printmaking has developed as a significant medium for Indigenous artists.

EXAMINE AND PREPARE

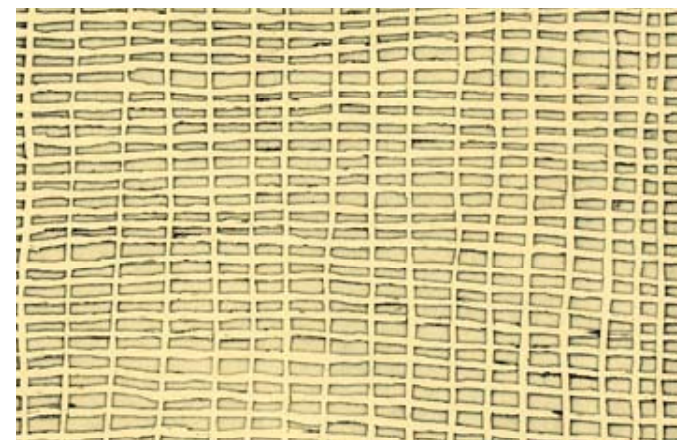
Before you complete this sheet, view the exhibition online or visit it in person. On The GEO Project website you can find the tour itinerary, search the Image Galleries and find downloads.

Research the artists involved in this exhibition – you can start by downloading artist biographies from the website.

CONSIDER

What are the similarities and differences in how each of the artists have responded to and made artworks about the plants that they have found?

Explain what you believe are the reasons for these.



Deborah Wurrkidj *Pandanus* 2006 etching on paper 33 x 24.5 cm

Which works communicate the most about:
the environment in which they were made?

the background of the artist?

Explain your answers

